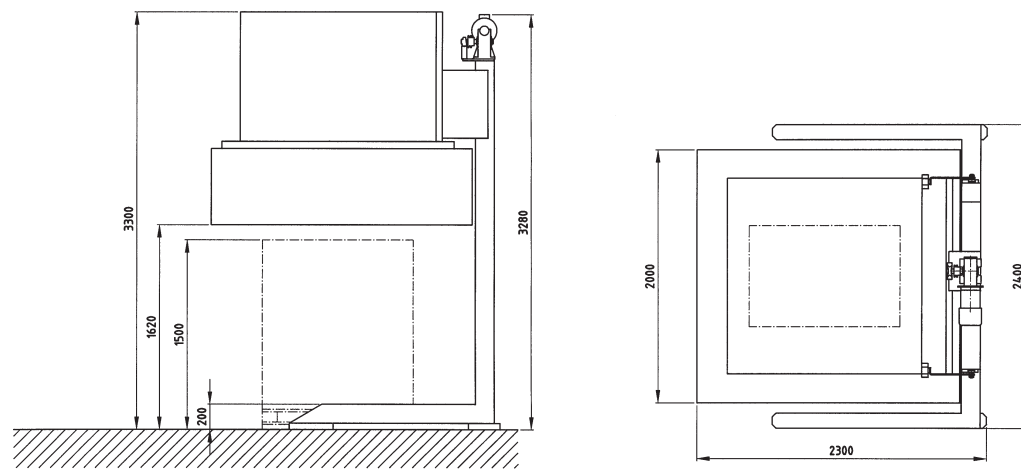


## CONTROL PANEL



Electric board with commands panel



## TECHNICAL DATA

Electrical supply	400V, 50HZ (other voltages on request)
Max. power consumption	10,3 Kw/hour (7,2 Kw/hour during pre-heating time)
Gas supply	Natural gas, LPG
Pressure required with natural gas	20 m bar (200 mm H2O)
Pressure required with LPG	100 m bar (1000 mm H2O)
Max. power of heaters	34 Kw (K-cal)
Pre-heating time	30 min.
Working temperature	200° C +/- 5%
Max. Production	20 packs/hour
Load dimensions	length 1.200 mm, width 1.200 mm,
Max height including pallet	1.500 mm
Cycle consumption (based on 20 cycles/hour)	0,16 nm3/cycle (natural gas)
Cycle consumption (based on 20 cycles/hour)	95 grams/cycle (LPG)

FLY Communication

SEMI-AUTOMATIC

THERMO-SHRINK MACHINE

TS 32/G



Automation Systems and Products for the Industry

Automation Systems and Products for the Industry

C.so Garibaldi, 298 Gattinara 13045 (VC) ITALY - Tel. 0039 0163 828911 Fax 0039 0163 828990 - info@effe3ti.com - www.effe3ti.com

# TS 32/G

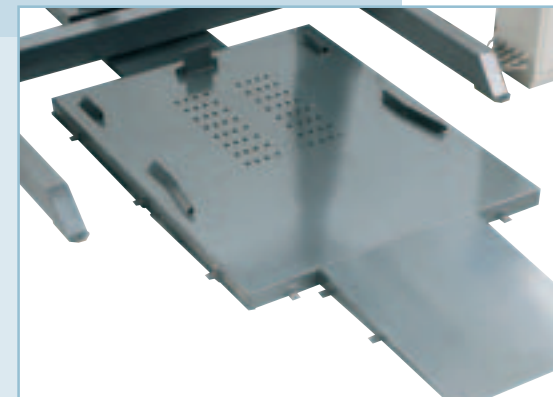
## Semi Automatic Thermo Shrink Machine TS 32/G

### Natural Gas or LPG

# THERMO-SHRINK MACHINE



Hood type thermo shrink machine to be used with natural gas or LPG, designed to heat and shrink the film covering palletised loads assuring stability and weather proof protection. The shrink hood and the patented device closing it, are designed to reduce considerably the power consumption and prevent the exit of combusted gases which are conveyed in a chimney placed on the top of the hood.



#### ASPIRATOR

The aspirator is to be placed beneath the thermo shrink oven in order to facilitate the attachment of the film on the lower part of the load, thus ensuring that the entire load remains protected by the film. This option comes with an access ramp.

#### Optional

#### SAFETY GUARDS

Guards consist of a metallic gating 2.000 mm high, 9.000 mm long, positioned to allow for the loading of the pallet from the front.



#### HEATHERS

Mobile hood on a portal frame, moved vertically by a gearbox motor commanded by an inverter. Heating system consisting of catalytic burners.



#### HOOD CLOSING DEVICE

Patented system that closes the hood saving on gas consumption and reducing the pre-heating time.